



TruView

Unified Network and Application Performance Management

Focused on the Experience of the End User



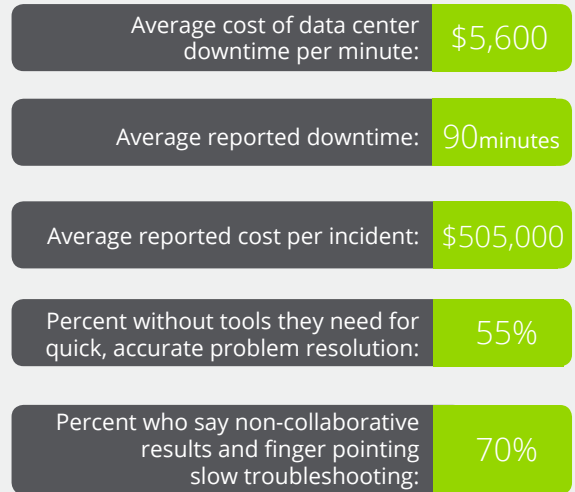
NETSCOUT[®]

BUSINESS CHALLENGE

Problems can occur anywhere from the physical layer to wireless, across the WAN, through the core and into the data center. The application delivery infrastructure is a highly interdependent eco-system and with no visibility into how this entire system is performing as a single entity, resulting in organizations being faced with high costs in network downtime, lost revenues and poor performance in terms of fast problem identification.

IT support teams are typically siloed using their tool of choice but this presents a challenge in that these disparate toolsets provide no correlated view into performance issues that may be present within any component across the application delivery infrastructure. Without the ability to understand how one component may be affect another at a specific point in time it becomes difficult if not impossible to quickly understand how well the infrastructure is transporting applications, how well those applications are performing, and where the problem truly lies.

Downtime Costs* = Frustration High**



*Ponemon Institute. 2011,
**NETSCOUT Market Research



TRUVIEW

Unified Network and Application Performance Management

Focused on the experience of the end user.

FAST

- Simple workflows allow you to quickly and easily understand problem domain and pinpoint root cause
- Automated application discovery speeds setup and ongoing management – Racked to Reporting in under 30 minutes.

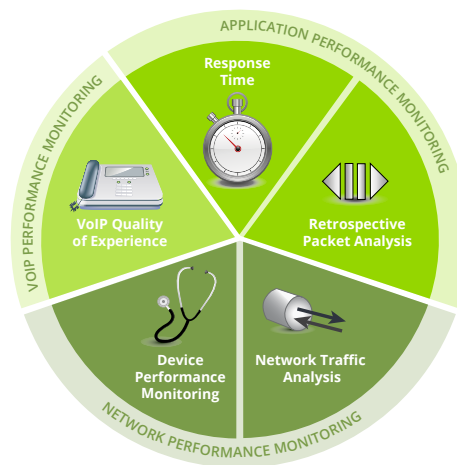
INTELLIGENT

- Self-learning baselines help you understand what's normal even at remote sites
- See how well your network, applications and devices are performing through time correlated views

COMPLETE

- Single appliance embeds and correlates all elements of the most important data sources such as packet, flow, SNMP and API data
- Monitor and troubleshooting everything from VoIP to Citrix to NTier transactions all through a single pane of glass

TruView™ is a unified solution for Application-aware Network Performance Management. TruView embeds the most important data sources such as packet, transaction, NetFlow/IPFIX, and SNMP and presents analytics in a time correlated single dashboard view. These correlated views will help you to quickly see how well the infrastructure is transporting applications and how well those applications are performing in context of the end user's experience. And, TruView's integrated 10 Gbps full line rate stream-to-disk packet capture ensures you'll never miss an important event again, as verified by theTolly Group independent performance test.



TruView can be deployed as an individual appliance or as part of a distributed configuration for larger environments. TruView appliances offer a new level of functional flexibility, allowing them to be deployed in optimized configurations for packet monitoring, flow collection, or both.

TruView Recognized by Leading Analyst Firms

Recipient of Frost & Sullivan's Product Innovation Leadership Award and Best Hybrid ANPM Solution in Enterprise Management Associate's Radar Report, TruView is leading the way in a new, emerging method of monitoring, troubleshooting, and analyzing both network and application systems commonly referred to as Application Aware Network Performance Management (AANPM).

AANPM takes data from both APM and NPM to create cross-platform visibility that enables all branches of IT to ensure high performance delivery of critical business applications.

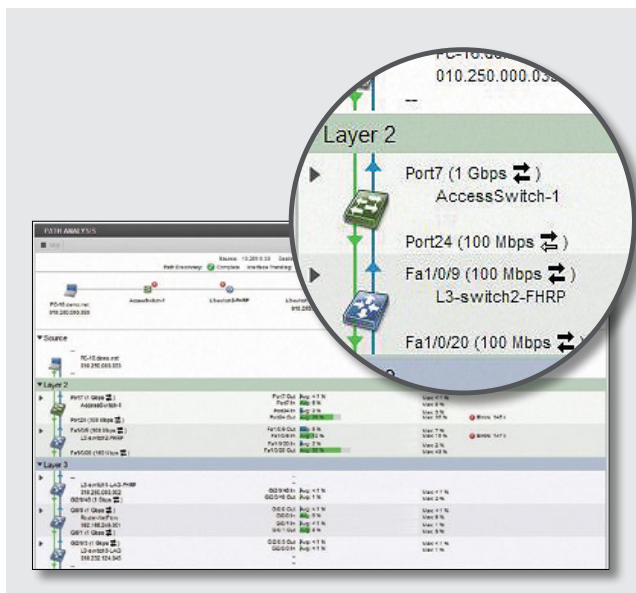


USER FAVORITES



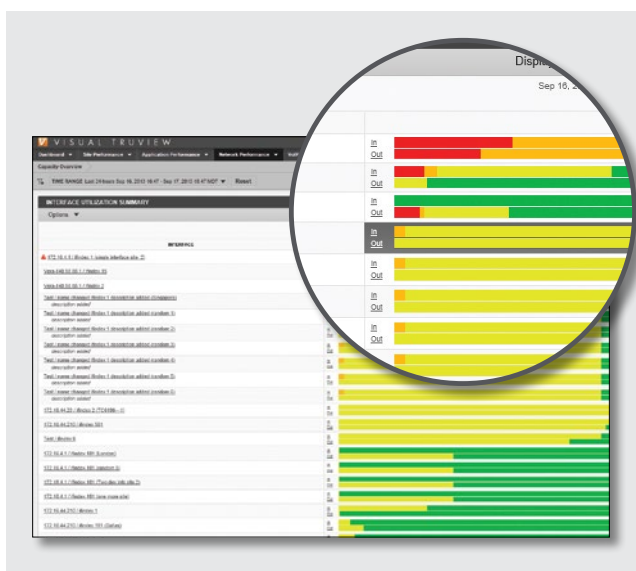
Next generation response time

TruView's Next Generation Response Time Measurement uniquely isolates performance problems down to the delay imposed by the Client, Server, Application, and Network so you can quickly identify where problems are rooted. Additionally, TruView is the only AANPM solution that can accurately measure EURT of Hybrid Cloud applications from the data center, without any cloud instrumentation.



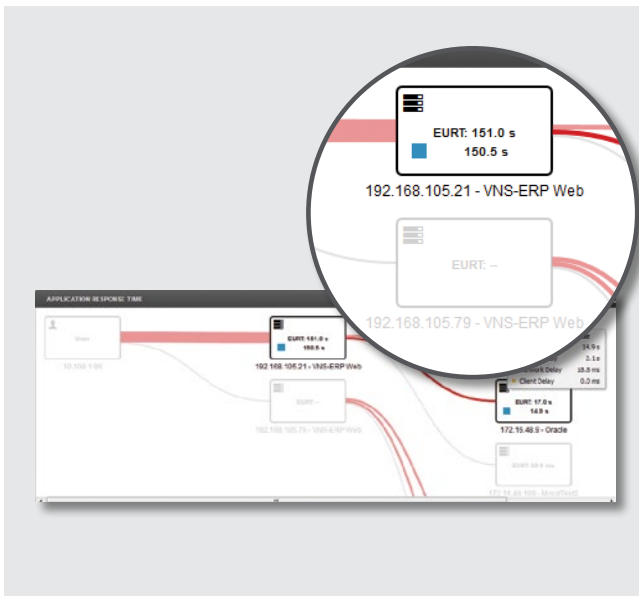
Automated Network Discovery & Path Analysis

TruView users gain the ability to track the path between end user and server as well as the health of devices along that path. When TruView identifies a network response time issue, path analysis is leveraged to identify the Layer 2 and Layer 3 path taken by end users, with visibility into the utilization, errors and discards along that path.



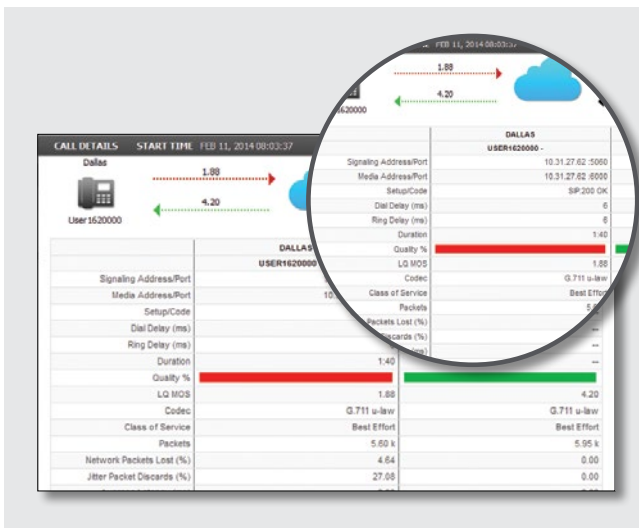
Capacity Planning

WAN utilization and traffic profiling has never been easier than with TruView's automated Capacity Planning reporting engine. Just filter on the network interfaces of interest and TruView provides you with easy to understand views of how long, or not, any given interface has been over or under-utilized. The utilization information is based upon 60 second granularity across an entire year assuring you of an accurate depiction of network utilization, leading to more informed infrastructure investments.



Advanced Transaction Analysis

Built-in application transaction analyzers provides out of the box support for Web, Citrix, SQL, Oracle, CIFS, XML and over 1000 other applications. TruView provides the most granular view of performance allowing you to visualize transactions and their N-Tier dependencies to help you understand what tier is affecting application performance.



Unified Communications

Gain one of a kind visibility into VoIP quality of experience with an easy to understand graphical depiction of the call, with drill down to understand the underlying degradation factors. TruView quickly identifies degradation factors such as Jitter, packet loss, latency, etc.



Single UI

Whether you leverage TruView as a single appliance that embeds five tools in one or deploy as a highly scalable distributed system, time correlated analytics across data sources displays in a standardized UI. Highly customizable dashboard views provide self-guided workflows patterned after a logical troubleshooting process making problem domain isolation and root cause identification possible in just 3 clicks!

DELIVERING BUSINESS VALUE

Cost Savings

- 100% investment protection with flexible platform that can change function as your needs change
- Tools consolidation through single appliance that embeds five tools in one saves on initial investment and multiple maintenance contracts
- Web services API with easy access event and performance information sharing with any 3rd party event management system such as IBM Tivoli, HP NNMi, ServiceNow, and others

Improved Staff Efficiency

- In-depth reporting provides performance metrics applicable across IT and business functions building a common view to align teams and reduce finger pointing
- Multi-tenant architecture and role based access provides users with just the data needed to understand if the problem is network or application related and logical workflows that drive to resolution
- 3-click workflows support logical troubleshooting processes enabling all IT functions including front line support the power to identify problem domain and route an issue correctly or simple solve it

Mitigate Risk and Ensure the Performance of Business Critical Applications

- Self-learning baselines and event alarms help manage SLAs for end user experience
- Quickly identify problem domain to application, network or server with a single click
- Automatic discovery and path analysis pinpoints the device, interface, transaction, or packets associated with any performance event



SPECIFICATIONS



Single Appliance

TruView

Specs	TruView-4300	TruView-6300
Input	4 X 1 Gbps	2 X 10 Gbps
Storage	10-37 TB	27-243 TB

Distributed System Components

TruView Flow Appliance

Specs	TruView-F-4300-100k	TruView-F-6300-300k
Flows per Second	4x1 Gbps	2x10 Gbps
Storage	10 TB	27 TB

TruView Central

Specs	TruView Central 6300 - Enterprise
Memory	128 GB
Storage	27 TB

ABOUT NETSCOUT

NETSCOUT SYSTEMS, INC. (NASDAQ: NTCT) is a market leader in real-time service assurance and cybersecurity solutions for today's most demanding service provider, enterprise and government networks.

NETSCOUT's Adaptive Service Intelligence™ (ASI) technology continuously monitors the service delivery environment to identify performance issues and provides insight into network-based security threats, helping teams to quickly resolve issues that can cause business disruptions or impact user experience. NETSCOUT delivers unmatched service visibility and protects the digital infrastructure that supports our connected world –

For more information about TruView please visit us at enterprise.netscout.com/truview

NETSCOUT®

Americas East

310 Littleton Road
Westford, MA 01886-4105
Phone: 978-614-4000
Toll Free: 800-357-7666

Americas West

178 E. Tasman Drive
San Jose, CA 95134
Phone: 408-571-5000

Asia Pacific

17F/B
No. 167 Tun Hwa N. Road
Taipei 105, Taiwan
Phone: +886 2 2717 1999

Europe

One Canada Square
29th floor, Canary Wharf
London E14 5DY, United Kingdom
Phone: +44 207 712 1672

NETSCOUT offers sales, support, and services in over 32 countries.

For more information, please visit enterprise.netscout.com or contact NETSCOUT at 800-309-4804 or +1 978-614-4000

© 2016 NETSCOUT SYSTEMS, INC. All rights reserved. NETSCOUT, nGenius, InfiniStream, Sniffer, nGeniusONE, ASI, Adaptive Service Intelligence and the NETSCOUT logo are registered or pending trademarks of NETSCOUT SYSTEMS, INC. and/or its affiliates in the United States and/or other countries ("NETSCOUT"). All other brands and product names and registered and unregistered trademarks are the sole property of their respective owners. Use of this product is subject to the NETSCOUT SYSTEMS, INC. ("NETSCOUT") End User License Agreement that accompanies the product at the time of shipment or, if applicable, the legal agreement executed by and between NETSCOUT and the authorized end user of this product ("Agreement"). NETSCOUT reserves the right, at its sole discretion, to make changes at any time in its technical information, specifications, service, and support programs.